



LED海报屏 “第一品牌”
LED Electronic Poster Screen "First Brand"

专利技术 独家方案

Exclusive solution for patented technology



专利技术 仿冒必究
Patent technology counterfeiting will be prosecuted

产品特点

Product features

拥有20年的行业经验,始终以用户为中心,通过大量的用户反馈和市场调研,深度挖掘并解决用户在LED显示屏使用中的痛点问题。例如,针对传统LED显示屏安装难、程序调试复杂、不便运输等难点,在2024年率先推出了折叠式LED电子海报屏,赢得了用户及业界的高度认可。

- ◆ 专利产品,独家技术。
- ◆ 支持移动蓄电池,磷酸铁率,安全性高,长续航,充电块,电池反复从点 ≥ 3000 次。
- ◆ 支持折叠,体积小,易收纳,方便运输,真正解决了携带不方便,国际邮费贵等问题。
- ◆ 私模设计,外观精美,机身采用航空铝材料,自身散热效果好,39mm超薄机身,43KG超轻机身。
- ◆ 无需专业技术人员安装,通电即可使用。
- ◆ APP无线发布内容,便捷式操作,内容一件传输。
- ◆ 快速锁设计,小白便能轻松驾驭,支持多台快速无缝拼接。
- ◆ 支持同步,异步,可用于高清电子海报,也可同步显示高清宣传片,会议PPT,直播背景等,用途广泛。
- ◆ SMD灯珠采用了“地砖级”GOB工艺,防刮伤,防掉灯,表面防溅水,防潮,使用更加稳定。
- ◆ 自带4个万向轮,轻松移动,想放哪里就放哪里。

Has 20 years of industry experience and always puts users at the center. Through a large amount of user feedback and market research, it deeply explores and solves the pain points of users in the use of LED displays. For example, in response to the difficulties of traditional LED display installation, complex program debugging, and inconvenient transportation, launched the foldable LED electronic poster screen in 2024, which has won high recognition from users and the industry.

- ◆ Patent products, exclusive technology.
- ◆ Support mobile batteries, iron phosphate rate, high safety, long endurance, charging block, battery repeated from point to point ≥ 3000 times.
- ◆ Supports folding, small size, easy storage, convenient transportation, truly solving problems such as inconvenient carrying and expensive international postage.
- ◆ Private mold design, exquisite appearance, the body is made of aviation aluminum material, with good heat dissipation effect, 39mm ultra-thin body, 43KG ultra light body.
- ◆ No need for professional technicians to install, can be used with power on.
- ◆ The APP wirelessly publishes content, with convenient operation and one piece transmission of content.
- ◆ Quick lock design, easy for beginners to control, supports seamless splicing of multiple devices quickly.
- ◆ Supports synchronization and asynchrony, can be used for high-definition electronic posters, as well as synchronously displaying high-definition promotional videos, conference PPTs, live streaming backgrounds, etc., with a wide range of applications.
- ◆ The SMD lamp beads adopt the "tile level" GOB process, which is scratch resistant, anti drop, surface splash resistant, moisture-proof, and more stable to use.
- ◆ Equipped with 4 swivel wheels, easy to move and place wherever you want.

LED电子海报屏选型

Selection of LED electronic poster screen



一体式(插电款/储能款)
Integrated (plug-in/energy storage)

高度 (height) : 2050mm / 宽度 (width) : 646mm / 厚度 (thickness) : 38mm



折叠式(插电款/储能款)
Folding (plug-in/energy storage)

高度 (height) : 1090mm / 宽度 (width) : 646mm / 厚度 (thickness) : 90mm

折叠式设计, 体积小, 易收纳, 运输方便

Supports folding, small size, easy storage, convenient transportation



无需安装, 通电即用

No installation required ready to use when powered on

成品发货, 无需专业技术安装调试, 即插即用

Finished product delivery no need for install and debug. professional technicians to plug and play



采用“地砖级GOB工艺”

Adopting the "floor tile grade GOB process"

表面防溅水, 防刮花, 放磕碰, 防潮, 稳定性更好

Surface splash proof, scratch proof, collision proof, moisture-proof, and better stability



支持多台无缝拼接

Support seamless splicing of multiple units

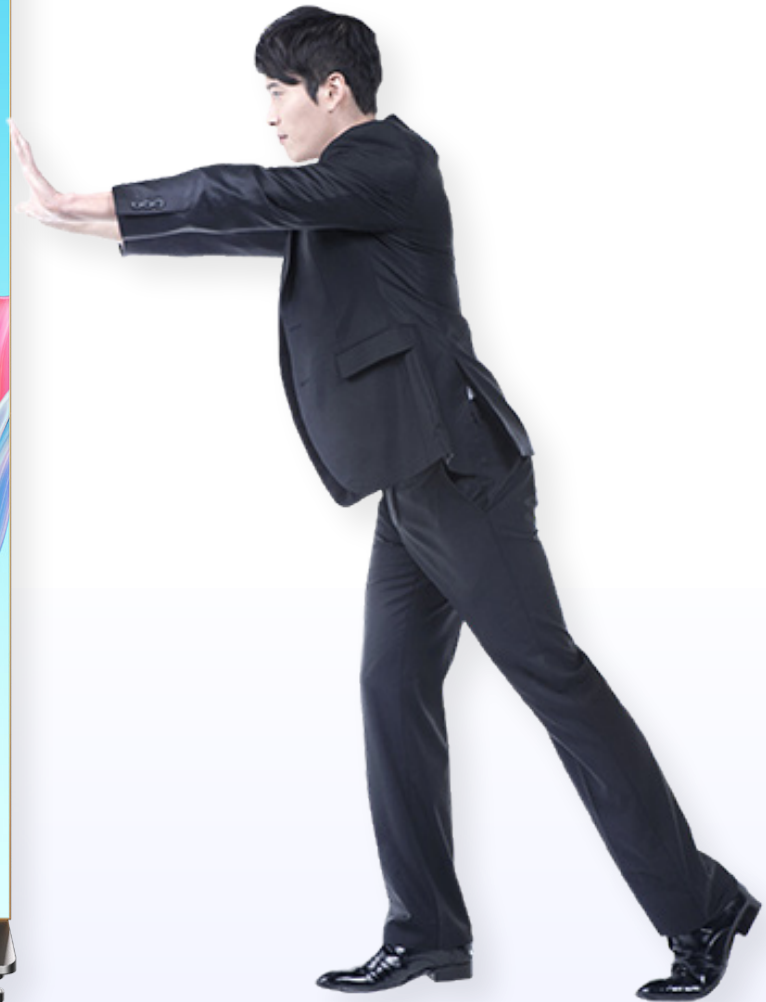
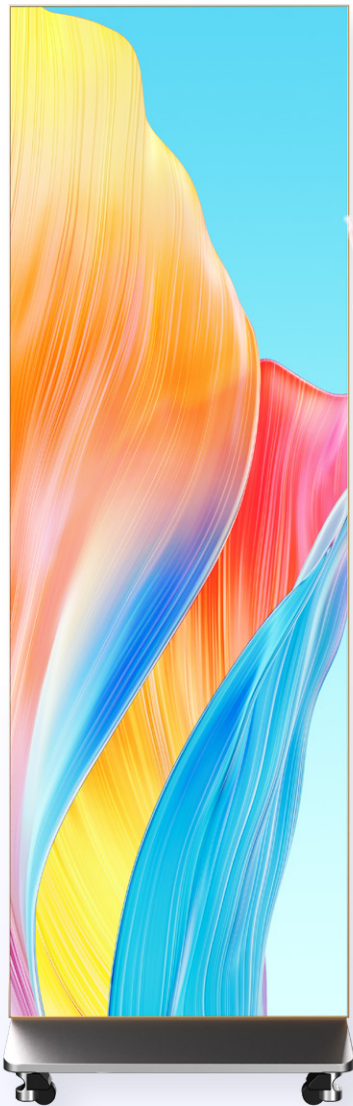
可单台使用,同时也支持多台无缝拼接成一个大屏,应用场景更加广泛
It can be used as a single device and also supports seamless splicing of multiple devices into a large screen,
with a wider range of application scenarios



万向轮设计

Universal Wheel Design

自带4个万向轮, 移动更方便, 想放哪里就放哪里
Comes with 4 swivel wheels, making it easier to move and place wherever you want



手机APP一键发布

One click release of mobile app

支持手机一键上传内容, 傻瓜式软件, 小白都能轻松操作

Support one click upload of content on mobile phones, a foolproof software that even beginners can easily operate

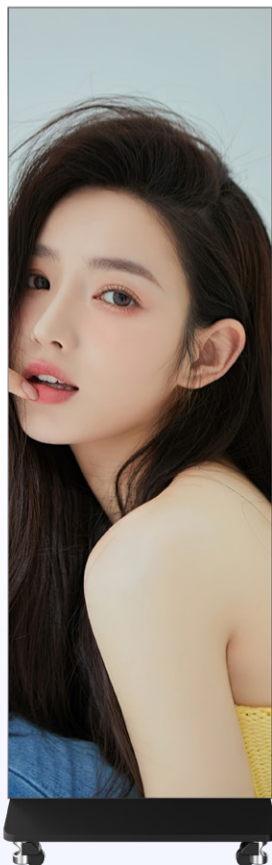
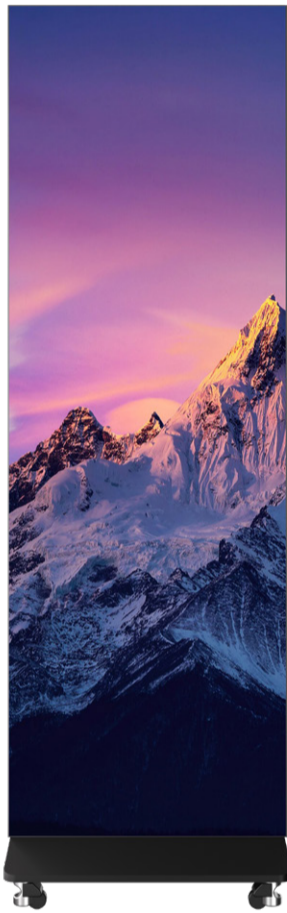
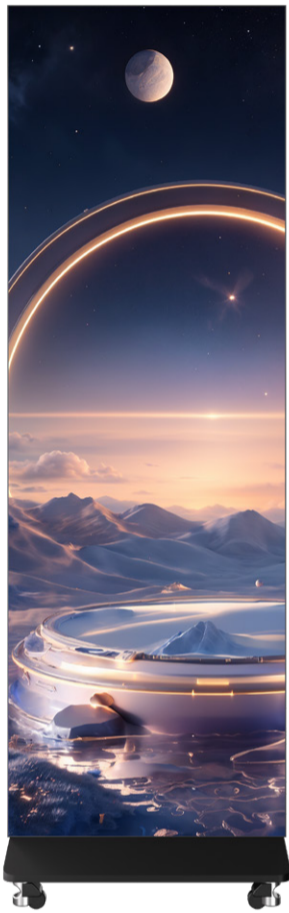


系统支持同步/异步

The system supports synchronous/asynchronous

异步可脱机循环播放, 用于广告宣传
同时也支持同步显示, 用于会议, 直播等场景

Asynchronous offline loop playback, used for advertising promotion.
It also supports synchronous display for scenarios such as meetings and live broadcasts



支持多种传输方式

Supports multiple transmission methods

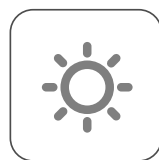
设备标配U盘, WiFi, 网口, HDMI (选配), 无线4G (选配)

The device comes standard with USB flash drive, WiFi, Ethernet port, HDMI (optional), and wireless 4G (optional)

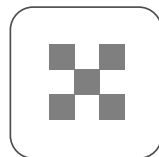


高清显示

High definition display



高亮度
high brightness



高色彩还原度
high color reproduction



高对比度
high contrast

应用场景案例展示

Application scenario case presentation



公司前台
Reception



餐饮店
Restaurant



学校
School



舞台
Stage



会议室
Meeting room



服装专卖店
Clothing store



会展展台
Exhibition booth

LED电子海报屏参数表

LED electronic poster screen parameter table

| 名称 Name | 项目 Project | P2.5 | P1.86 | P1.53 | P1.25 |
|-------------------------------------|--|---|-------------------|-------------------|-------------------|
| 显示模块参数 Display module parameters | 像素点间距 Pixel spacing | 2.5mm | 1.86mm | 1.538mm | 1.25mm |
| | 像素构造 Pixel construction | 表贴三合一LED | 表贴三合一LED | 表贴三合一LED | 表贴三合一LED |
| | 模组分辨率 Resolution ratio | 128*(h)64点 | 172*(h)86点 | 204*(h)104点 | 256*(h)128点 |
| | 模组尺寸 Module Size | (w)320*(h)160mm | (w)320*(h)160mm | (w)320*(h)160mm | (w)320*(h)160mm |
| | 防护工艺 Protective technology | GOB | GOB | GOB | GOB |
| | 模组重量 Module weight | 0.55kg | 0.55kg | 0.55kg | 0.55kg |
| 整机组成 Whole machine composition | 整机模组组成 Whole machine module composition W*H | (w)2*(H) 12张 | (w)2*(H) 12张 | (w)2*(H) 12张 | (w)2*(H) 12张 |
| | 整机分辨率 Overall resolution W * H | (w)256*(H) 768px | (w)344*(H) 1032px | (w)416*(H) 1248px | (w)512*(H) 1536px |
| | 显示尺寸 Display Size | 640*1920mm | 640*1920mm | 640*1920mm | 640*1920mm |
| | 外观尺寸 Dimension | 646*2050mm | 646*2050mm | 646*2050mm | 646*2050mm |
| | 整机重量 Gross weight of the machine | 43kg | 43kg | 43kg | 43kg |
| 光学参数 Optical parameters | 平整度 Flatness tolerance | 0.5mm | 0.5mm | 0.5mm | 0.5mm |
| | 白平衡亮度 White balanced brightness | 650CD | 650CD | 650CD | 650CD |
| | 灰度等级 Gray scale | 14-16BT 可调 | 14-16BT 可调 | 14-16BT 可调 | 14-16BT 可调 |
| | 色温 Color temperature | 3200-9000可调 | 3200-9000可调 | 3200-9000可调 | 3200-9000可调 |
| | 最佳视距离 Best visual distance | 3-20M | 3-20M | 3-20M | 3-20M |
| | 视角(水平) Perspective (horizontal) | 160° | 160° | 160° | 160° |
| | 视角(垂直) Perspective (vertical) | 160° | 160° | 160° | 160° |
| | 发光点中心距偏差 Tolerance of center to center distance of luminous point | ≤3% | ≤3% | ≤3% | ≤3% |
| | 亮度均匀性 luminance uniformity | ≥95 | ≥95 | ≥95 | ≥95 |
| | 色度均匀性 Chromaticity uniformity | ±0.003Cx,Cy之内 | ±0.003Cx,Cy之内 | ±0.003Cx,Cy之内 | ±0.003Cx,Cy之内 |
| | 对比度 contrast ratio | 8000:1 | 8000:1 | 8000:1 | 8000:1 |
| 通电要求 Power on requirements | 供电要求 Power supply requirements | 110-240V | 110-240V | 110-240V | 110-240V |
| | 峰值功耗 Peak power consumption | 430W | 450W | 550W | 650W |
| | 平均功耗 Average Power | 145W | 150W | 185W | 220W |
| 通讯参数 Communication parameters | 同步/异步 Synchronous/Asynchronous | 支持 support | | | |
| | 通讯方式 Communication method | APP/U盘/网口/4G远程APP/USB drive/Ethernet port/4G remote | | | |
| | 通讯接口 Interface | JS485*1 WIFI*1 U盘*1 HDMI*2 | | | |
| 扬声器 Speaker | 是否内置扬声器 Is there a built-in speaker | 50*12mm*2PCS | | | |
| | 音频接口 audio | 3.5音频接口/支持外接功放 3.5 Audio Interface/Supports External Amplifier | | | |
| 性能处理 Performance processing | 驱动方式 Drive mode | 恒流驱动 Constant current drive | | | |
| | 换帧频率 Frame Frequency | 60HZ | | | |
| | 刷新率 Refresh rate | ≥3840HZ | | | |
| 使用参数 Using parameters | 寿命典型值 Typical lifespan values | 50000H | | | |
| | 工作温度范围 Working temperature range | - 40—50°C | | | |
| | 工作湿度范围 Operating humidity range | 10-80% 无结露 | | | |
| | 存储温度范围 Storage Temperature Range | - 50—50RH | | | |
| | 存储湿度范围 Storage humidity range | 10-85%RH 无结露 | | | |